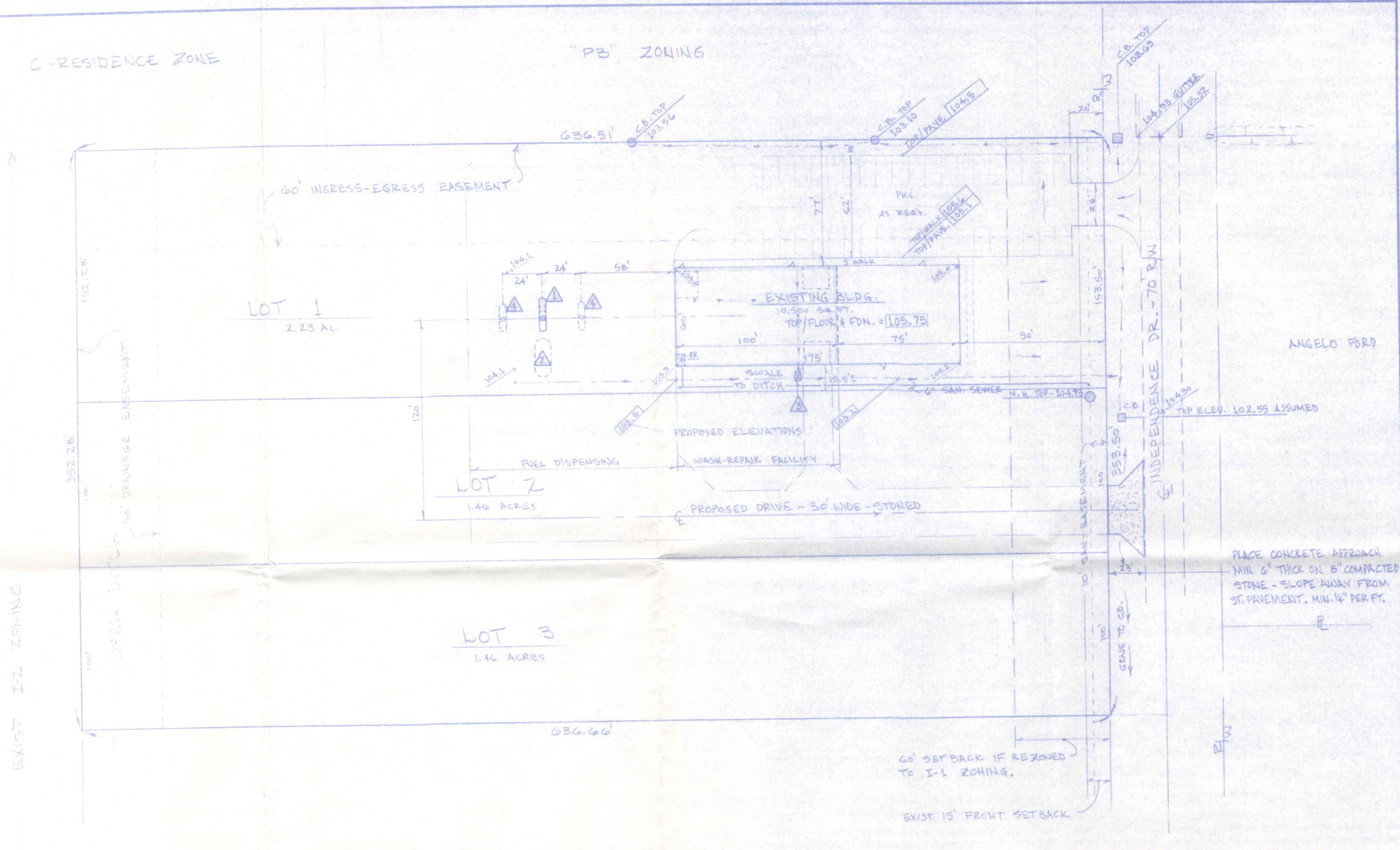


C-RESIDENCE ZONE

"PB" ZONING



EXIST. I-Z ZONING

ANGELO FORD

PLACE CONCRETE APPROACH
MIN. 6" THICK ON 8" COMPACTED
STONE - SLOPE AWAY FROM
ST. PAVEMENT. MIN. 1/4" PER FT.

LEGEND

- ▲ - PROPOSED FUEL PUMP DISPENSER & SHACK (4'x6'±)
- ▲ - PROPOSED UNDERGROUND FUEL (DIESEL) STORAGE TANK
- ▲ - PROPOSED 500 GAL. OIL SEPERATER FOR INTERIOR FLOOR DRAINAGE
- ▲ - PROPOSED FUTURE FUEL DISPENSER ISLANDS

NOTES:

- 1) FUEL DISPENSING PROPOSED IS NOT FOR RETAIL PURPOSES BUT ONLY FOR DOMESTIC NEEDS OF REPAIR/MAINTENANCE SHOP;
- 2) FUEL PUMP/TANK INSTALLATION CONTRACTOR SHALL BE RESPONSIBLE FOR ALL REQ'D. PERMITS & APPROVALS NECESSARY FOR INSTALLATION AND INITIAL OPERATION OF FUEL DELIVERY/STORAGE SYSTEM.

EUGENE HOGREFE, INC.		NAPOLEON, OHIO	
INDEPENDENCE DR.		APPROVED BY:	DRAWN BY EDS
SCALE: 1" = 40'	DATE: FEB - 1992		REVISED 2/94 RDS
SITE PLAN: PROPOSED TRUCK WASH & REPAIR FACILITY			
NAPOLEON ENGINEERING & SURVEYING, INC. P.O. BOX 671 NAPOLEON, OH. 43545			DRAWING NUMBER S-1